



Presented by
Columbia Yacht Club
August 22, 2020

Offshore Sailing Instructions

1. RULES

The Organizing Authority for the regatta is Columbia Yacht Club. The regatta will be governed by: the rules as defined by the Racing Rules of Sailing 2017-2020 (RRS) and these Leukemia Cup Sailing Instructions. Crew limits shall be waived.

2. NOTICES TO COMPETITORS

Notices to competitors will be posted on the Official Notice Board, located on Leukemia Cup Regatta YachtScoring web site:

<https://YachtScoring.com/emenu.cfm?eID=11809>

3. CHANGES IN SAILING INSTRUCTIONS

Any change in the sailing instructions will be posted by 1000 CDT on the day it will take affect.

4. DIVISION AND CLASS ASSIGNMENTS, FLAGS AND START TIMES

One race is scheduled on Saturday, August 22, 2020.

4.1. Class assignments shall be made by Columbia Yacht Club and shall be posted on the YachtScoring scratch sheet listing by 1800 Friday, August 21.

4.2. Skipper packets will be available for pick up at Columbia Yacht Club Wednesday evening August 19th, 2020 through Friday evening August 21st 2020 at the club White Cap on the rail deck, and on Saturday morning August 22nd 9:00 to 1100 on the rail deck.

5. TIME LIMIT

The time limit shall be 1600 hours for all classes.

6. RADIO COMMUNICATIONS

The Race Committee shall attempt to report visual signals displayed and other pertinent information over VHF Channel 78. This information is provided as a courtesy. Errors or omissions involving such courtesy broadcasts shall not be grounds for redress.

7. SCORING

7.1. All classes shall be racing using handicaps assigned by Columbia Yacht Club, each boat will be ranked by her corrected time in class.

7.2. Ties will be broken by comparing the amount of donations raised by the owner and crew of the tying boats. This changes RRS A7.

8. PENALTIES

The Two-Turns penalty (RRS 44.2) is in effect for all classes. This may modify individual class rules.

9. PROTESTS

9.1 A boat intending to protest or seek redress shall notify the Race Committee of the sail number(s) of the boat(s) being protested immediately after finishing and shall receive specific acknowledgment.

9.2 The protest time limit is sixty (60) minutes after the RC Signal Boat has docked.

9.3 The Protest Desk will be located on rail deck of Columbia Yacht Club. Protest forms will be available at the Protest Desk.

9.4 For the requirements stated in RRS 61.3, a *protest* or request for redress by a boat may be met by electronically submitting the protest information to the protest committee within the time limit stated in the sailing instructions.

Information required by RRS 61.2 may be delivered using electronic mail delivery to <mailto:PROTEST@COLYC.ORG> or using the protest submission form located at <https://www.YachtScoring.com/emenu.cfm?eID=11809>.

Instructions on how to file a protest form may be found on the relevant event page on YachtScoring.com. The party submitting a protest electronically should travel to the regatta venue as quickly as possible to participate in an arbitration meeting or protest hearing..

9.5 Protests will be heard at the Columbia Yacht Club. Protestors shall be present at the protest desk within 30 minutes of the protest time limit.

9.6 Notices will be posted on the official notice board no later than 30 minutes after the protest time limit to inform competitors of hearings in which they are parties or named as witnesses along with the location of the hearing.

9.7 Violations of Section 4 of the Notice of Race are protestable only by the Race Committee. This changes RRS 60.1.

10. BERTHING

Consistent with health guidance from the State of Illinois and the City of Chicago, no docking at CoLYC's dock will be provided to 2020 Leukemia Cup Regatta competitors pre nor post racing.

11. PRIZES

11.1 Prizes will be awarded to 1st, 2nd and 3rd place boats at a virtual awards ceremony held via zoom following racing, and subsequently delivered to competitors' yacht clubs for them to pick up.

11.2 If a class has less than 3 entries, the class shall be scored combined with other classes within the same start section using handicaps assigned by Columbia Yacht Club combined.

12. RACING AREAS and COURSES TO BE SAILED

The starting line for Starting Area 4 will be located approximately 0.5 miles southeast of the south end of the outer breakwater at approximately 41:52.30 N & 87:35.20 W.

Mark 1 will be an inflatable mark located at approximately 41:53.35 N & 87:33.20 W.

SA7 is a white and red cylinder located at approximately 41:51.17 N & 87:33.41 W.

Illustrations shows the course to be sailed, the order in which the marks are to be passed, and the side on which each mark is to be left. The Race Committee will signal the course by displaying the course number on a sign board.

The Race Committee may choose different courses for the DISTANCE and DOUBLE HANDED classes, the CATALINA and JIB & MAIN classe and the SPINNAKER RACING DIVISION classes. If this is the case, the new course shall be displayed at the warning signal for that class.

The starting mark will be a yellow buoy. Turning marks will be either fixed government navigation aids, pumping station cribs or in the case of Mark 1, an orange tetrahedron . The finish mark will be a white buoy.

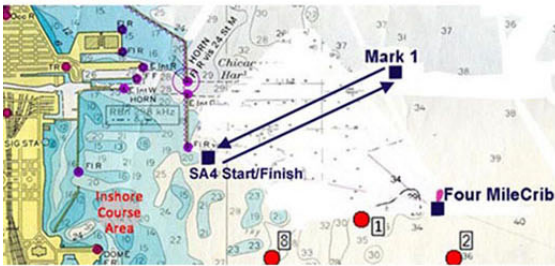
PROHIBITED AREAS The following areas are prohibited to boats racing: The areas around the pumping stations (cribs) and the marks placed around them by the Coast Guard to establish a perimeter. Boats are prohibited sailing inside of this perimeter. Note that RRS 19.1 turns off RRS 19 and RRS 18 applies at these marks.

- 12.1 Course 1 shall be from SA4, round Mark 1 to port, and return to the SA4. Course length is 3.64 nautical miles.
- 12.2 Course 2 shall be from SA4, round the Four Mile Crib to port, round Mark 1 to port and return to the SA4. Course length is 4.72 nautical miles.
- 12.3 Course 3 shall be from SA4, round Mark 1 to port, round the William Dever Crib to port, and return to SA4. Course length is 6.43 nautical miles.
- 12.4 Course 4 shall be from SA4, round the Four Mile Crib to port, round the William Dever Crib to port, and return to the SA4. Course length is 7.50 nautical miles.
- 12.5 Course 5 shall be from SA4, round Mark 1 to starboard, round the Clemson Shoals Lighted Bell Buoy #4 to starboard, and return to SA4. Course length is 11.36 nautical miles.
- 12.6 Course 6 shall be from SA4, round SA7 to port, and return to the SA4. Course length is 3.50 nautical miles.

13 Class Breaks and Starting Times

	Warning	Start	RC Signal
Double Handed	12:00	12:05	1 pennant
Single Handed	12:00	12:05	1 pennant
Distance 2	12:10	12:15	2 pennant
Distance 1	12:20	12:25	3 pennant
Catalina Owners	1:00	1:05	4 pennant
JAM	1:00	1:05	4 pennant
First 36.7	1:10	1:15	5 pennant
Tartan 10	1:10	1:15	5 pennant
PHRF Spinnaker	1:15	1:20	6 pennant

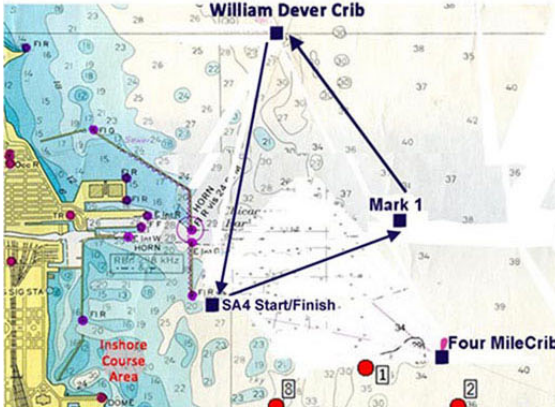
Course 1



Course 2



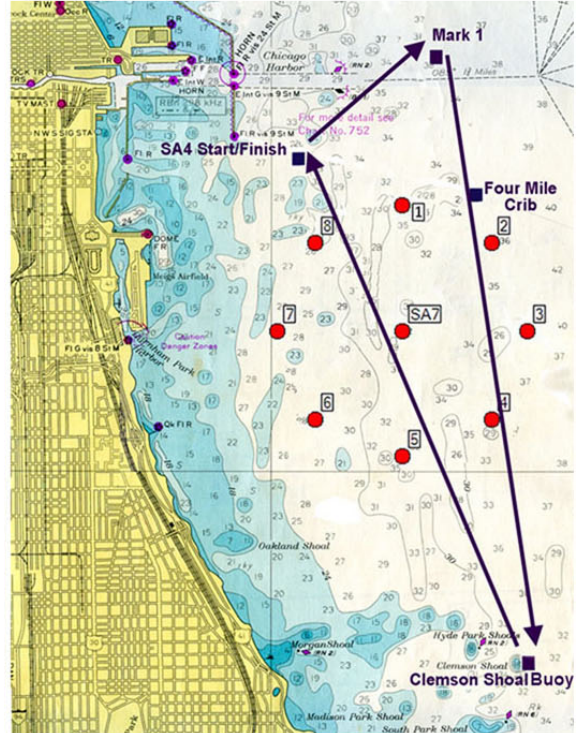
Course 3



Course 4



Course 5



Course 6

